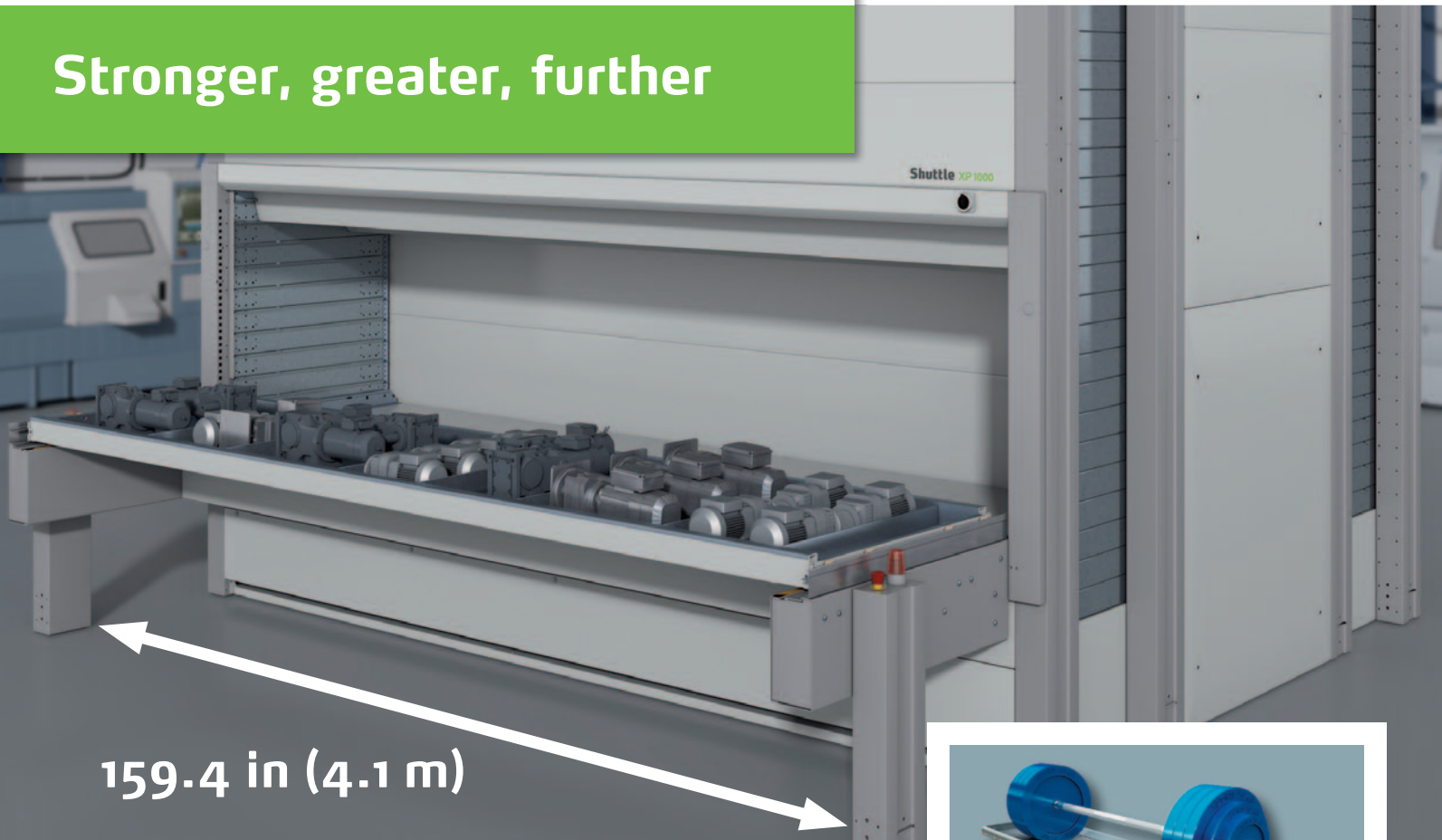


NEW: Shuttle® XP 1000

Stronger, greater, further

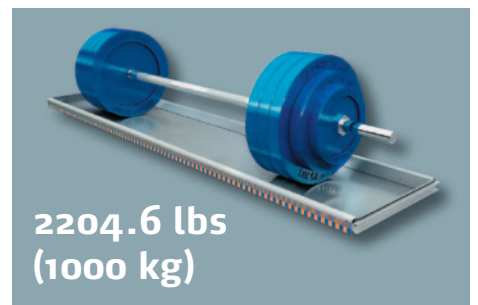


159.4 in (4.1 m)

The **Shuttle XP 1000** extends the Shuttle XP range with up to 2204.6 lbs (1000 kg) payload per tray and offers a new additional solution spectrum.

The new Shuttle XP 1000 provides:

- Increased efficiency for storage, retrieval and distribution of (heavy) goods
- Fast, complete and reliable delivery of goods, even with increasing warehouse logistics complexity
- Cost savings due to optimization of the available warehouse capacity
- Increased availability and optimization of the material workflow
- Improved productivity due to faster goods access
- Protection and safety of both personnel and stored goods
- Outstanding payload per tray over the complete range of tray widths

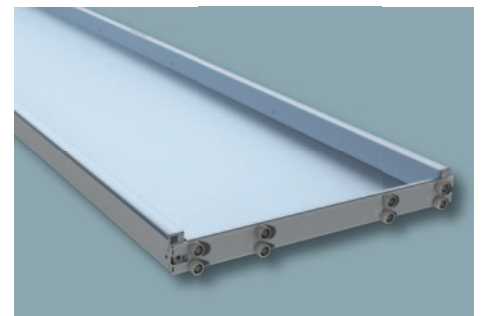


2204.6 lbs
(1000 kg)

The Shuttle XP 1000 is particularly suited for storing:

- Small parts in bins / containers (with a large number of bins per tray)
- Large / heavy tooling
- Pallets
- Spare parts

Shuttle XP 1000: stronger, greater, further



Competitive advantages of the Shuttle XP 1000

Payload

For storage of heavy goods, the new Shuttle XP 1000 offers up to 2204.6 lbs (1000 kg) payload per tray. At a tray width of 159.4 in, it still offers 1763.7 lbs (800 kg) payload!

Efficiency

A comprehensive range of pick-to-light systems enables simple, fast and accurate picking.

Flexibility

A wide range of expansion options and accessories make the Shuttle XP 1000 incredibly flexible and a secure investment.

Ergonomics

The integrated crane in combination with the full tray extraction device easily lifts loads of over 44.1 lbs (20 kg) and therefore provides not only ergonomic working conditions, but also drastically reduced work effort.

Stability and Modularity

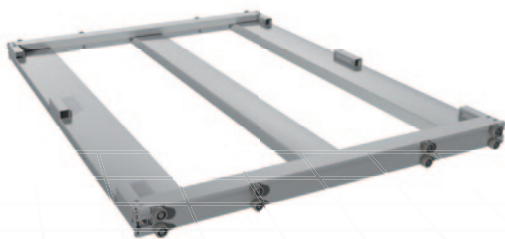
The Shuttle XP 1000 fits perfectly to any existing building situation and customer process. The total gross unit load is 67 or 120 Tonnes.

The height can be easily adjusted to suit any future building modifications, additional access openings may be added (maximum 6 access openings per unit) and it is possible to mix different tray types depending upon the application. All of the above modifications can of course be carried out after the unit has already been installed.

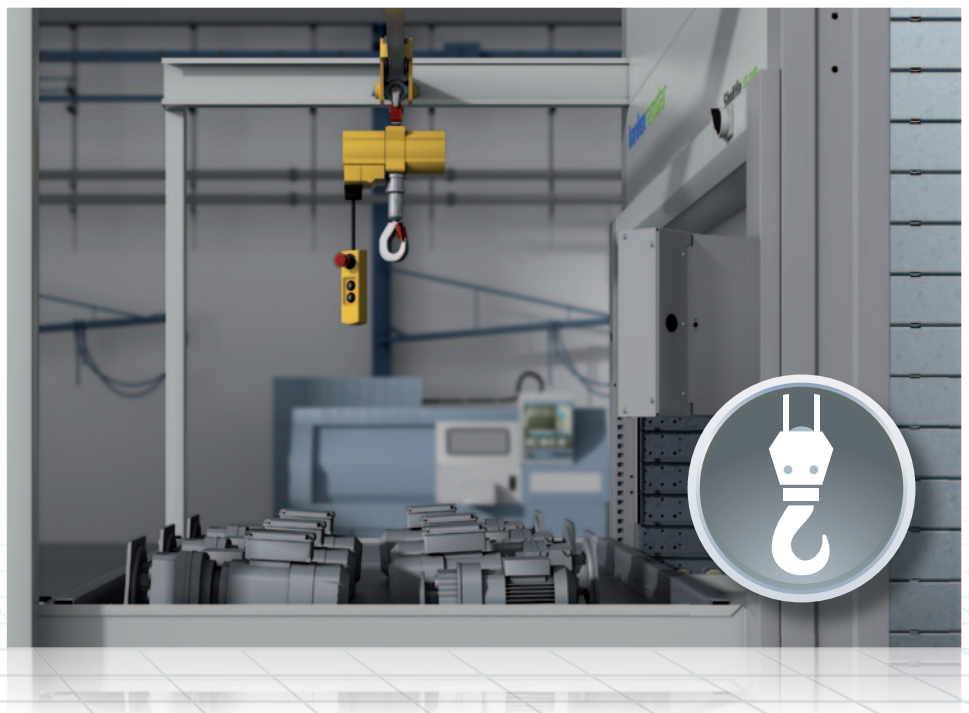


With two new applications, the Shuttle XP 1000 offers added value in the higher payload range in a very simple manner

1. The specially designed trays provide the simplest way to **store pallets**



2. The **integrated crane** simplifies and speeds up the handling of heavy goods



Shuttle XP 1000: stronger, greater, further



Technical Data

Unit Dimensions

Width	62.2	to	172.4	in (1.6 to 4.4 m)
Depth	93	to	171	in (2.4 to 4.3 m)
Height	100.4	to	789.4	in (2.6 to 20.1 m)

Unit Height Pitch

3.94 in (100 mm) increments

Performance Data

Vertical Speed: Individually adjustable per tray up to 2.4 ft/s (0.75 m/s)

Maximum gross unit load: 67 or 120 t

Trays

Depth 24 to 50 in (610 to 1270 mm)

Width	Payload per tray
49.2 in (1.3 m)	2204.6 lbs (1000 kg)
96.4 in (2.5 m)	1984.1 lbs (900 kg)
159.4 in (4.1 m)	1763.7 lbs (800 kg)

Intermediate widths in 50 mm increments are also available

Options

- Factory-fitted crane
- Special trays for pallet storage
- Tray extraction for stacker truck operation
- Up to six access openings per unit
- Automatic/semi automatic full tray extraction
- Logicontrol 200 unit control
- Vertical photocells for shaft monitoring
- Position Indicator with LEDs
- Vario Position Indicator
- TIC (Transaction Information Centre) Matrix
- LED Light pointer
- Laser Light pointer
- Emergency service system
- Confirmation Bar
- Weighing system



Further Information:
www.kardexremstar.com